

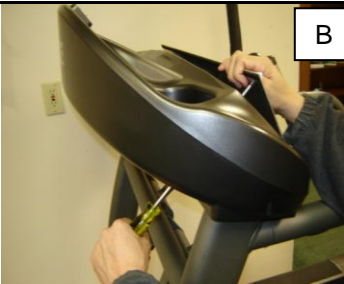
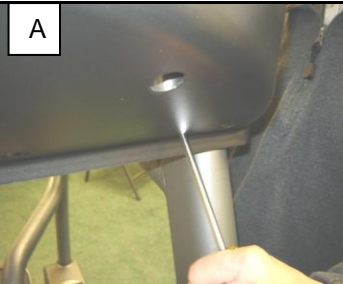
**80 SERIES PST4 / CT4 UPPER DISPLAY BOARD ASSEMBLY INSTRUCTIONS**

**INTRODUCTION**

This document is used to install upper electronic components on treadmills manufactured 09/2010 to present.

**TOOLS REQUIRED**

- Phillips Head Screw Driver
- Dowel (approximately 16" long).



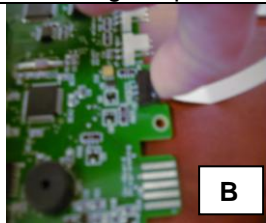
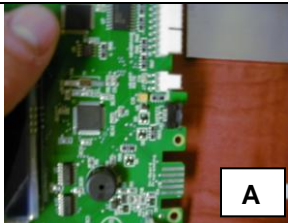
**#1:** To remove electronics from console insert a long (16") push rod or Phillips head screw driver through the access hole and push until separated from Velcro. **(FIGURE A)**. Grab the panel **(FIGURE B)** and remove from Wire Harness. Follow instructions to remove/replace parts as necessary.



**#2:** Lay the membrane panel on a flat surface. Place cloth underneath the panel so as not to scratch the front while installing the parts.



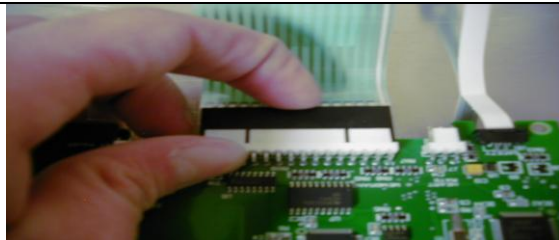
**#3:** Lay the LCD screen on the membrane panel. Insert the 4 screws and tighten them down.



**#4:** Take your upper board and slide the locking clips with the tip of your finger nail away from the upper board. **(Figure A)**

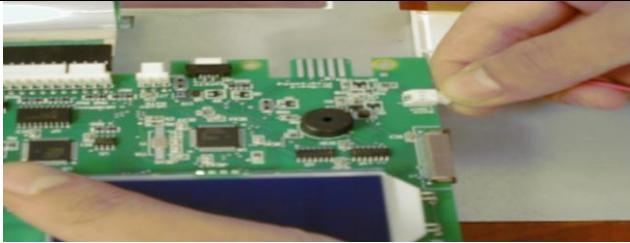
**#4:** Slide the safety leash into the clip. Push the locking clips back in. **(Figure B)**

**NOTE: Make sure the pure white part of the leash faces you inserting it into the connector.**

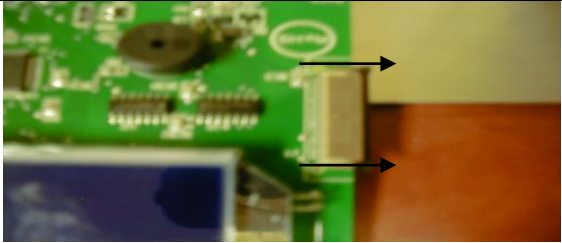


**#5:** Lay the upper board face up and connect the ribbon cable into the upper board.

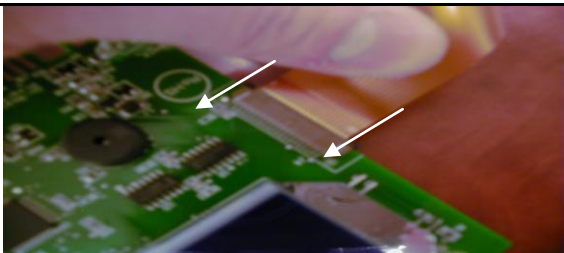
80 SERIES PST4 / CT4 UPPER DISPLAY BOARD ASSEMBLY INSTRUCTIONS



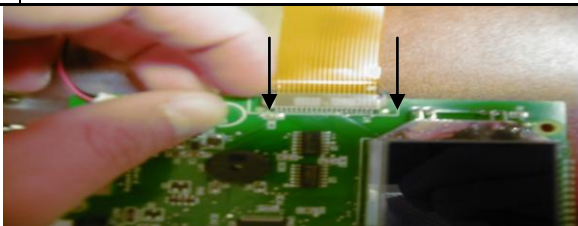
#6: Connect your 2-pin power harness from the LCD screen into the upper board. The connection is grooved so it only goes in one way.



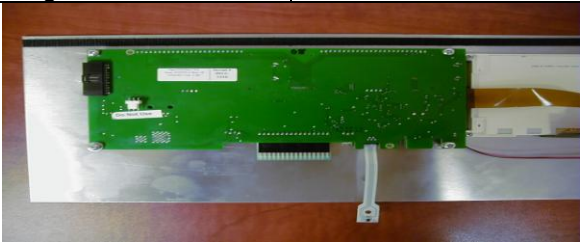
#7A: Take the tip of your finger nails and place them on the edge of the locking clips to pull them away.



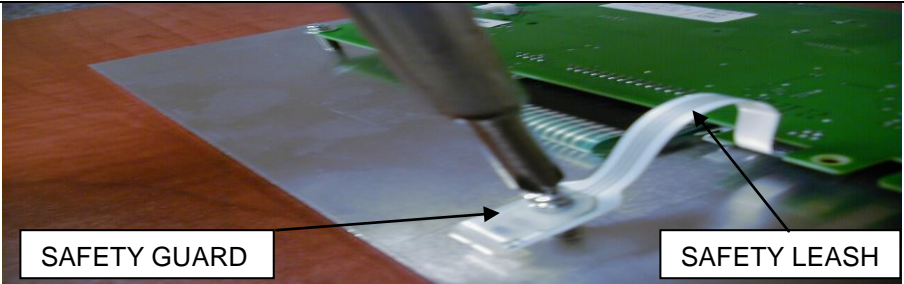
#7B: Insert the LCD ribbon cable into the connector. Make sure the silver tabs are facing you when inserting.



#7C: Take the tip of your finger nail and push the locking clips back into place.

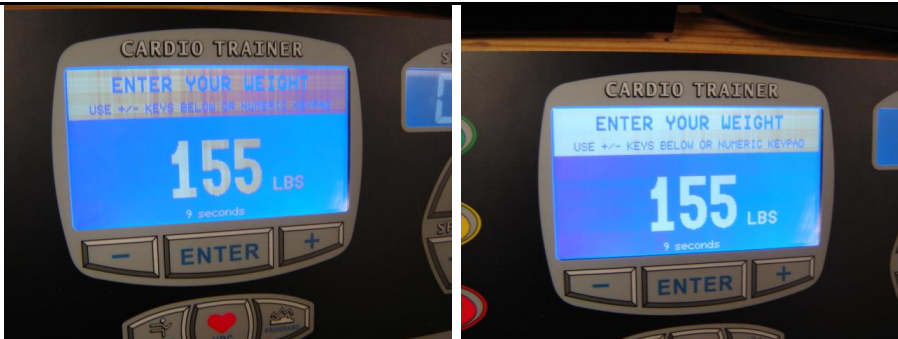


#8: Place the upper board onto the membrane panel. Insert the screws and lock washers then tighten them down.



#9: Insert the screw thru the safety guard and safety leash. Tighten the screw down to the stud at the bottom of the membrane panel.

## 80 SERIES PST4 / CT4 UPPER DISPLAY BOARD ASSEMBLY INSTRUCTIONS



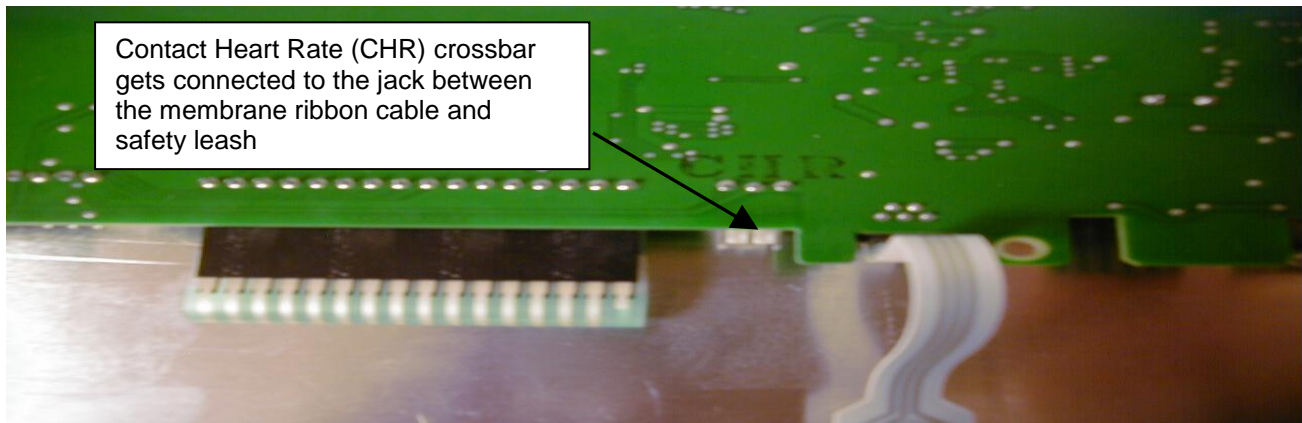
### #10: ADJUSTING THE CONTRAST ON LCD SCREEN.

**NOTE: YOU WILL HAVE TO ADJUST THE CONTRAST ON PST4 / CT4 DISPLAYS AFTER INSTALLING ANY UPPER DISPLAY COMPONENT.**

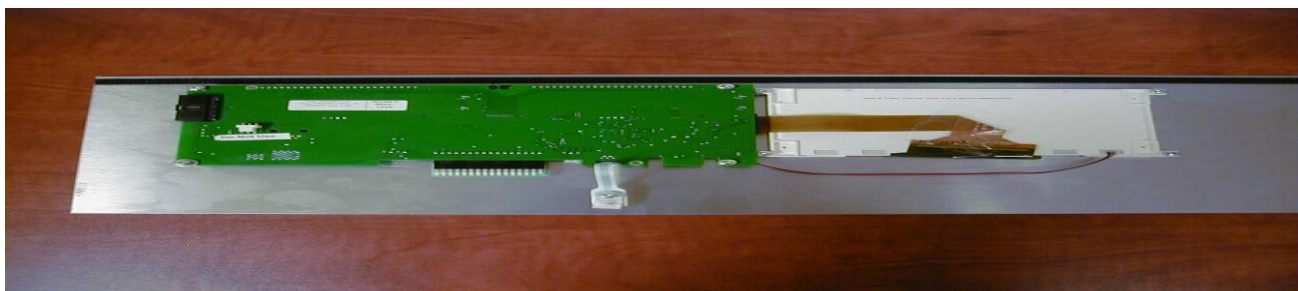
- a) Have the display off, leave machine plugged into the wall outlet.
- b) Enter DIAG mode by pressing ENTER & START at the same time.
- c) Hold the ENTER button down and press the + or – keys to adjust the contrast.

### **\*\*NOTICE\*\***

Contact Heart Rate (CHR) crossbar gets connected to the jack between the membrane ribbon cable and safety leash



Refer to the picture above which shows the correct connector to use for the CHR Crossbar. If the CHR Crossbar is not connected properly, the machine will turn on automatically when plugged into the wall outlet. It may also give a PO error code.



Here is a picture of the assembly when it's complete.

**Please contact the Technical Service @ 1-800-526-3423 if you have any questions.**