

## 80 SERIES ET2 UPPER DISPLAY BOARD ASSEMBLY INSTRUCTIONS

### INTRODUCTION

This document is used to install upper electronic components on treadmills manufactured 09/2010 to present.

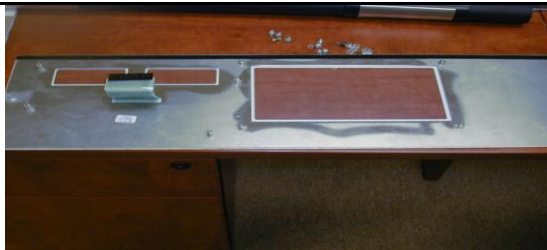
### TOOLS REQUIRED

- Phillips Head Screw Driver
- Dowel (approximately 16" long).

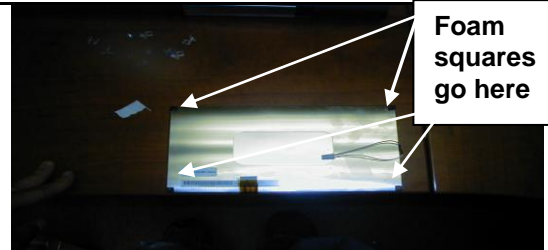
### ACTIVITY/PROCESS



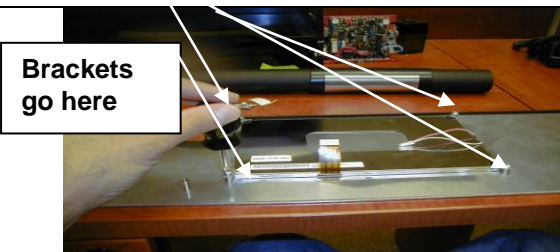
**#1:** Insert a long push rod or Phillips head screw driver (approximately 16" long) thru the access hole on bottom back of HTEC assembly (FIGURE A). Grab the panel and pull it away from the HTEC assembly once the push rod pops the panel off the Velcro seal from the top (FIGURE B). Disconnect console from Wire harness and follow instructions to replace parts as necessary.



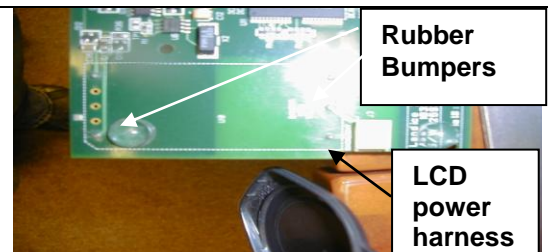
**2:** Place the membrane panel on a clean, flat surface.



**3:** Take the foam squares (QTY 4) and place them on each corner of the LCD screen.



**4:** Secure the LCD screen to the membrane panel with the brackets (qty 4) and LCD screws. **LCD Screws are smaller than display board screws.**

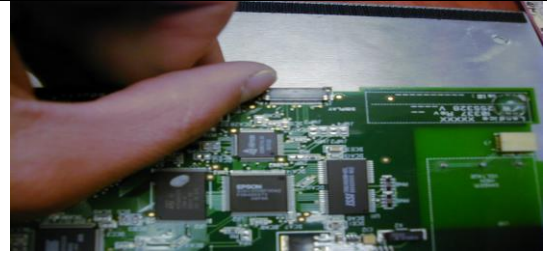


**5:** Mount the rubber bumpers on the outer edge of the display board where the LCD power harness also connects.

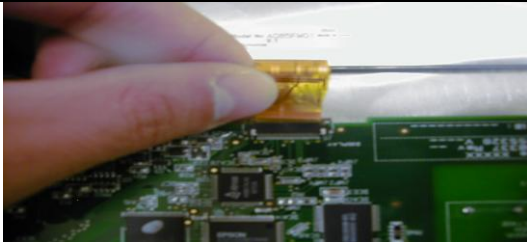
## 80 SERIES ET2 UPPER DISPLAY BOARD ASSEMBLY INSTRUCTIONS



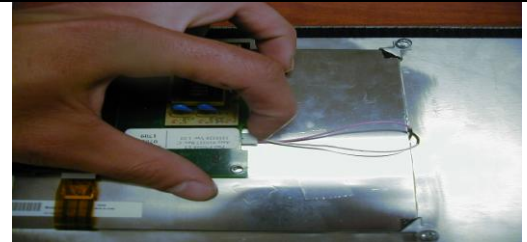
**6:** Take the membrane ribbon cable and connect it to the pins on the upper board.



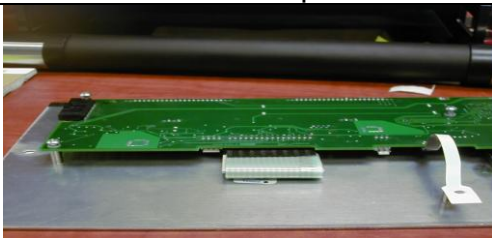
**7:** Push the LCD ribbon cable connection (brown clip) out with the tip of your fingernail.



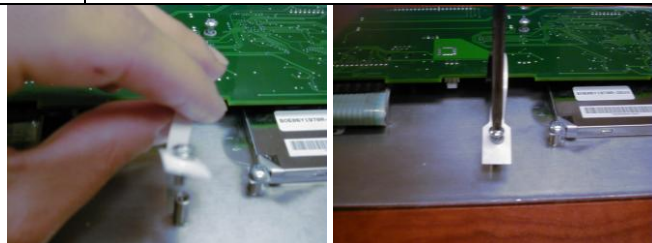
**8:** With one hand, slide the LCD ribbon cable into the connector on the upper board. Use the other hand to push in the brown clips to lock the ribbon cable in place.



**9:** Flip the upper board over and connect the 2-pin LCD power harness to the upper board.



**10:** Mount the upper board to the membrane panel by aligning the holes and tightening the display board screws down.



**11:** Take the safety leash and secure it to the membrane panel. **DO NOT TWIST LEASH WHILE SECURING IT DOWN TO THE PANEL.**



**12: ADJUSTING THE BRIGHTNESS ON LCD SCREEN. NOTE: YOU WILL HAVE TO ADJUST THE BRIGHTNESS ON ET-2 DISPLAYS AFTER INSTALLING ANY UPPER DISPLAY COMPONENT.**

- a) Press START to turn display on.
- b) Press MENU to access the menu screen.
- c) Press SETUP button to access default setup screen.
- d) Press SYSTEM button to access system menu.
- e) Press BRIGHTNESS to access display set up.
- f) Press the + or – buttons to adjust the brightness on LCD Screen.

**80 SERIES ET2 UPPER DISPLAY BOARD ASSEMBLY INSTRUCTIONS**

THIS IS WHAT THE WHOLE ASSEMBLY LOOKS LIKE WHEN FINISHED.

**IF YOU HAVE ANY QUESTIONS PLEASE CALL 1-800-LANDICE  
FOR TECHNICAL ASSISTANCE.**