

L70 & 80 SERIES (GREEN) SCR MOTOR CONTROL BOARD / REPLACEMENT INSTRUCTIONS

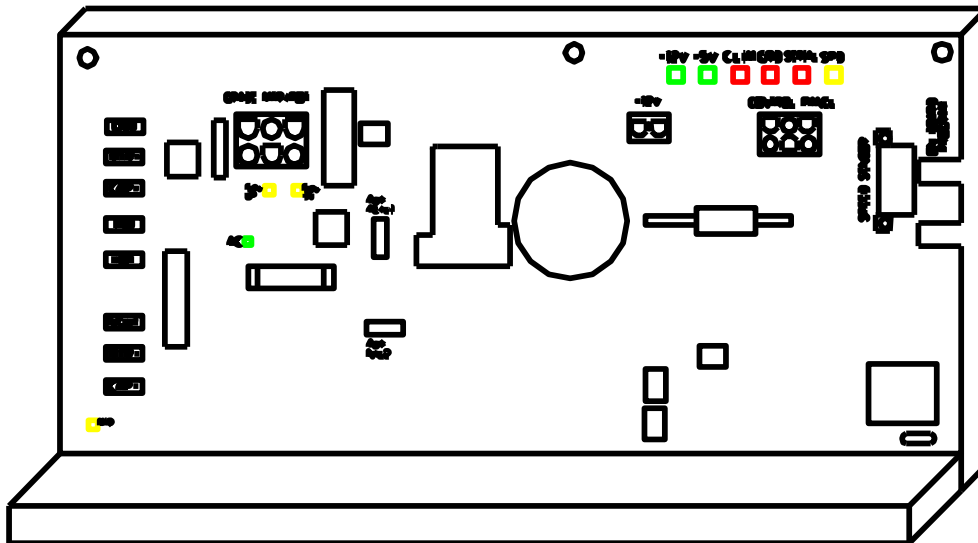
INTRODUCTION

This document is used for replacing Red SCR boards on treadmills manufactured *11/2006* to present.

TOOLS REQUIRED

- Power drill with #2 Phillips Head Bit
- Pliers

ACTIVITY/PROCESS



Removal Instructions:

- 1) **Unplug** the line cord from the wall outlet.
- 2) Disconnect the elevation harness, speed sensor connections, main harness and 12 volt connection from the lower board.
NOTE: If the unit has an LVS (Landice Vision System): Remove the LVS **Brown** wire from **AUX AC L1** terminal and **Blue** wire from **AUX N L2** terminal.
- 3) Remove the following wires from the corresponding terminal:
 - **Black** drive motor wire from the **MTR +** terminal and **White** drive motor wire from the **MTR -** terminal
 - **Brown** line cord wire from the **AC/L1** terminal and **Blue** line cord wire from the **N/L2** terminal
 - **Green** ground wire from **GND** terminal
 - **Red** choke wire from the **IND** terminal
 - **Black** capacitor wire from **CAP +** and **White** capacitor wire from **CAP -**

Remove the 2 Phillips head screws holding lower board to the motor pan. Remove board.

L70 & 80 SERIES (GREEN) SCR MOTOR CONTROL BOARD / REPLACEMENT INSTRUCTIONS

Installation Instructions:

1) Lay lower board flat inside the motor pan. Reconnect wires to the lower board:

CAP (-)	White wire from capacitor
CAP (+)	Black wire from capacitor
IND	Red wire from filter choke
NEUT	Blue wire from line cord receptacle
HOT	Brown wire from line cord receptacle
MTR (-)	White wire from drive motor
MTR (+)	Black wire from drive motor

If the unit has an LVS system (TV option) connect the following:

*AUX AC L1	Brown wire from TV line cord
*AUX N L2	Blue wire from TV line cord

2) Turn lower board so it's upright. Line up the holes from lower board to motor pan. Mount the board onto the motor pan using the 2 Phillip head screws.