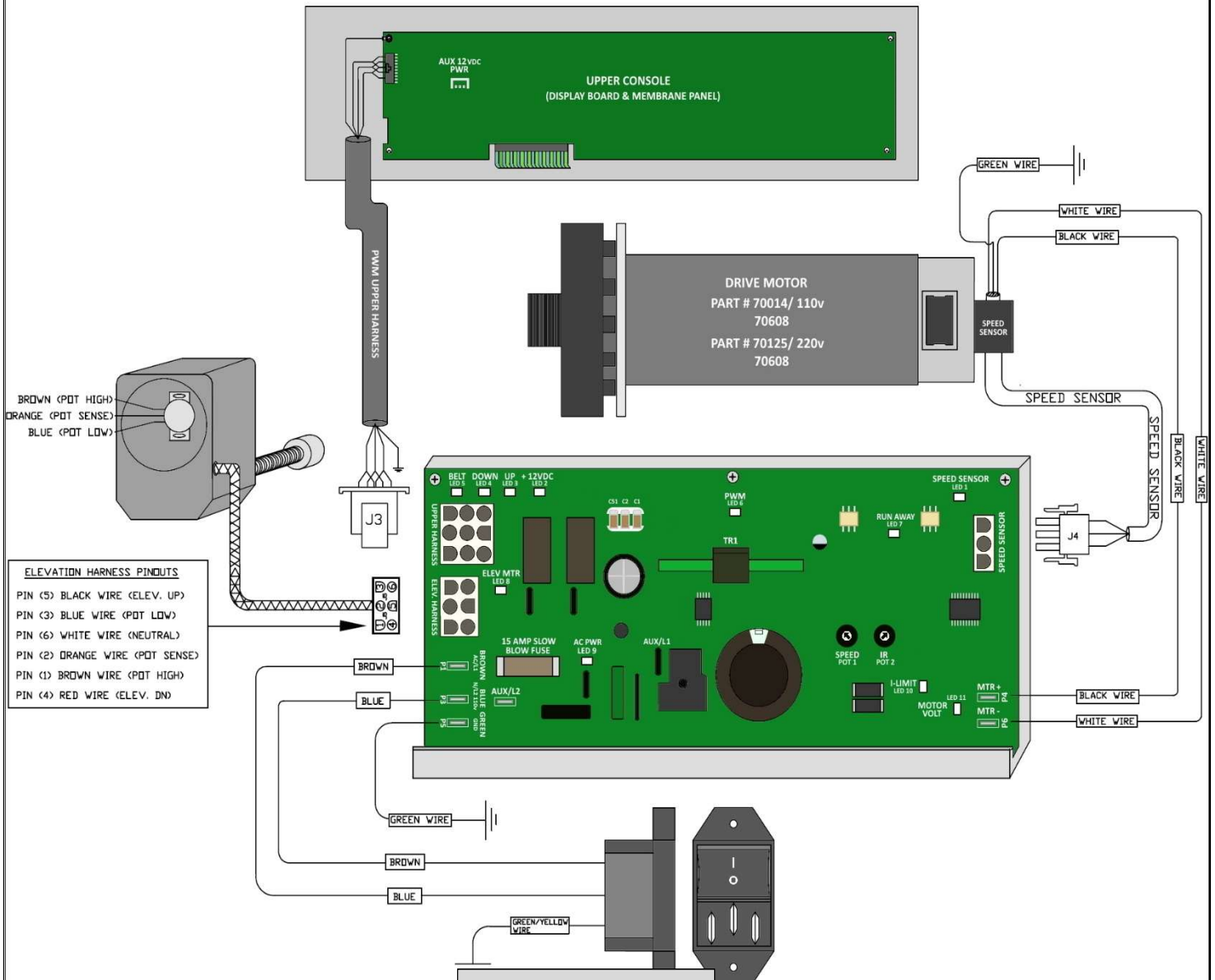


Landice PWM Motor Control Board Instructions

TOOLS NEEDED: • Needle Nose Pliers • #2 Phillips Head Screwdriver



Removing the MCB

PLEASE NOTE: If the treadmill currently has a Horizontal or Double Stack Relay Board, the replacement will be a Vertical MCB (Landice part #70455).

1. Disconnect AC Power from treadmill.
2. Carefully remove each wire connection and harness from the MCB.
3. Using your # 2 Phillips Head screwdriver, remove MCB mounting screws.

If replacing a Horizontal MCB, new mounting holes need to be drilled into the motor pan for the new board! Using a #25 Drill Bit, and a #10-32 Tap Bit, do the following:

Align one mounting hole on the Vertical MCB to one of the mounting holes in the motor pan. Using a marker or pen, mark where the 2nd mounting hole will need to be drilled. Drill and tap out the secondary mounting hole.

Revision Date 07/2020

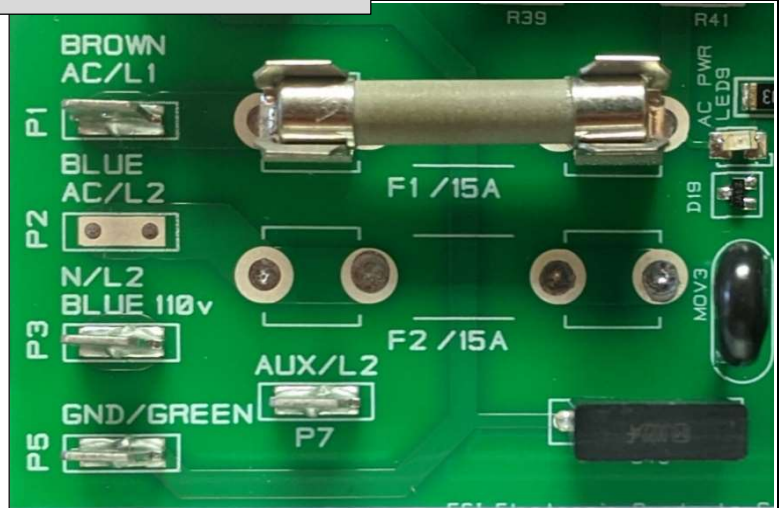


Connecting the Motor Control Board

1. **BROWN** wire from Line Cord Connector (LCC) to the **P-1 LINE** terminal.

2. **BLUE** wire from LCC to the **P-3 Neutral** terminal.

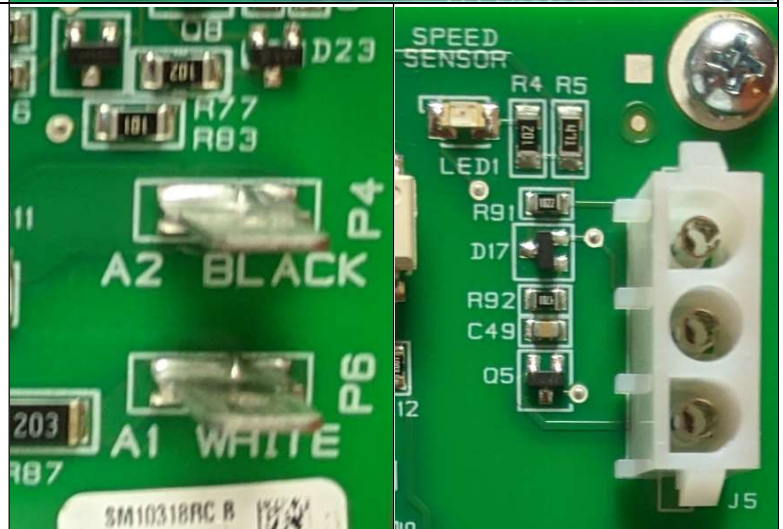
3. **GREEN** wire from LCC to the **P-5 GND** terminal, and ground to motor pan.



4. **BLACK** wire from the drive motor to the **P-4 Black (MTR +)** terminal

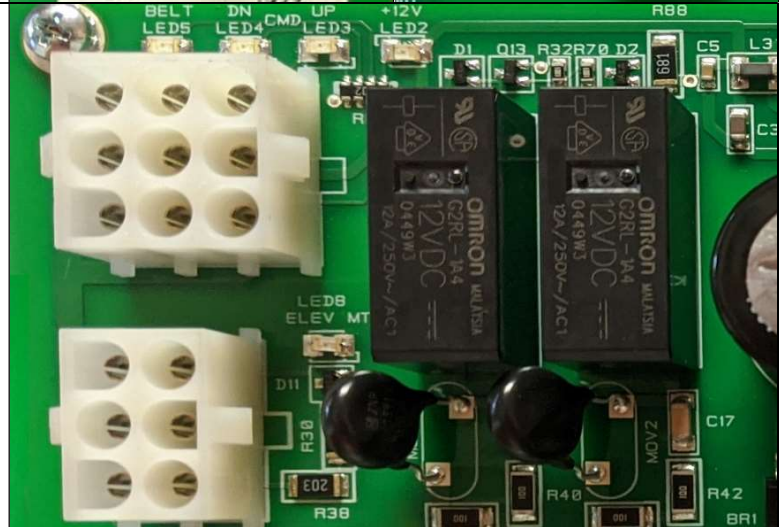
5. **WHITE** wire from the drive motor to the **P-6 White (MTR -)** terminal.

6. **SPEED SENSOR Harness** to the 3-pin Molex Connector.



7. **UPPER WIRE Harness** to the 9-pin Molex Connector.

8. **ELEVATION Harness** to the 6-pin Molex Connector.



PLEASE NOTE: NO SPEED CALIBRATION NECESSARY. POTS ARE PRESET AT THE FACTORY, CONTACT LANDICE BEFORE ADJUSTING!

CALL LANDICE TECHNICAL SERVICE, 1-800-526-3423, OPTION 3 FOR ASSISTANCE

Rev Date 07/2020

